



## Life-course migration in coastal communities - Norway

Many locals leave, few newcomers stay for long.

Olaf Foss  
NIBR




## Outline

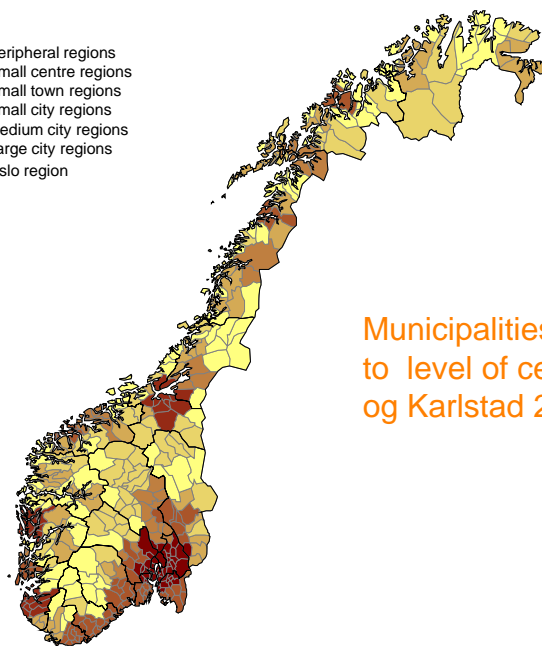
1. Recent national demographic trends
2. Recent population trends i coastal Norway
3. Life-course migration trends in coastal areas



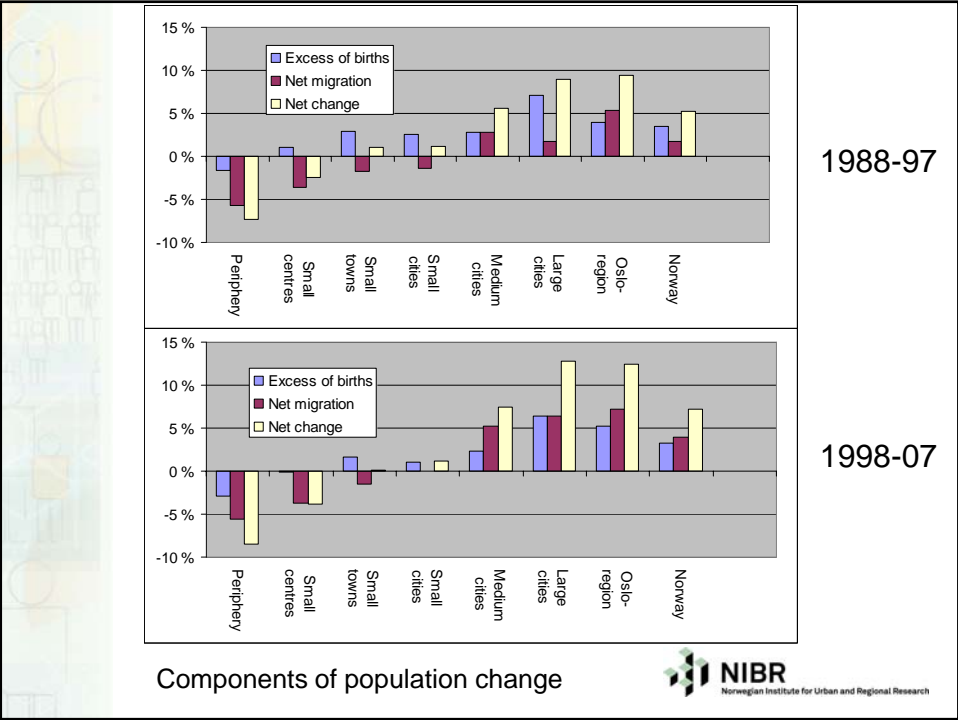
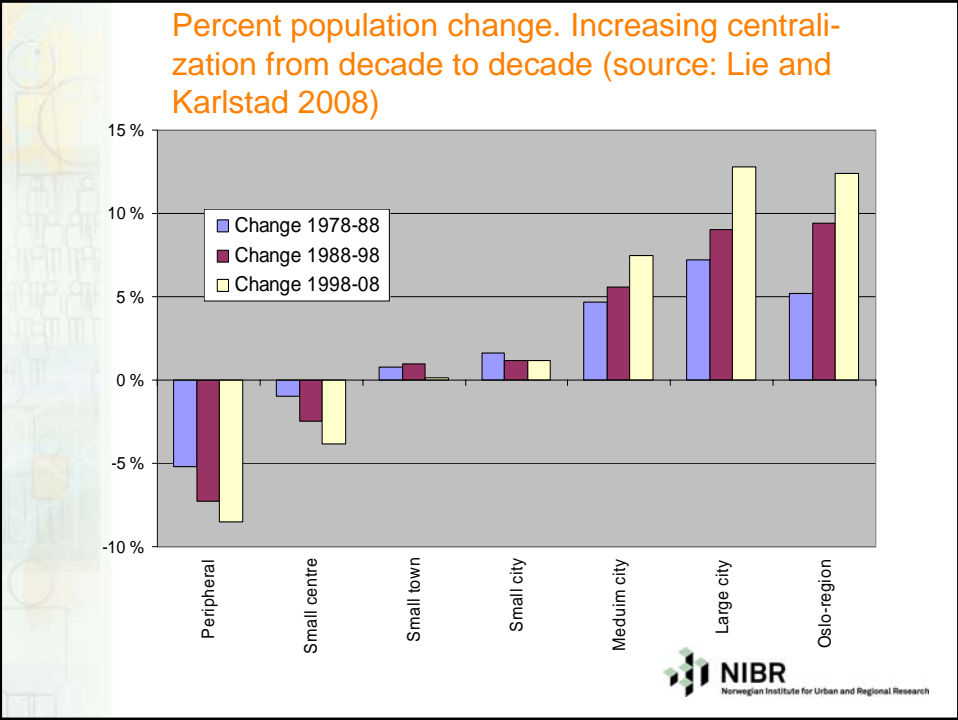
## Recent national demographic trends

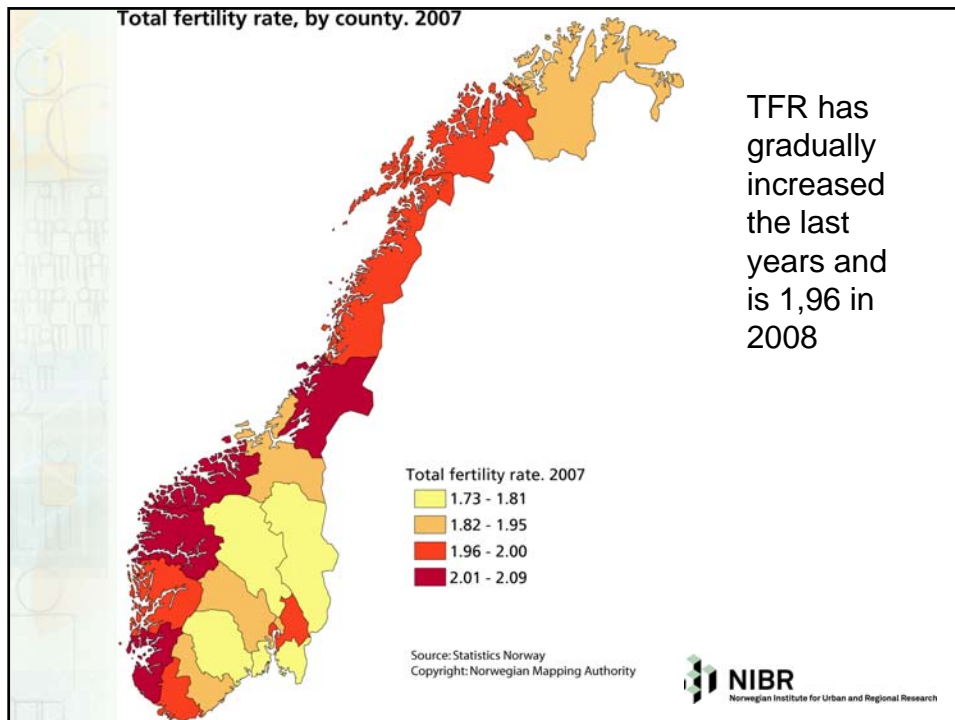
- Centre – periphery
- Net migration and natural change
- Impact of immigration

 Peripheral regions  
Small centre regions  
Small town regions  
Small city regions  
Medium city regions  
Large city regions  
Oslo region



Municipalities according  
to level of centrality (Lie  
og Karlstad 2008)





## General demographic trends summary:

- Long-lasting strong population centralization – increasingly caused by unbalanced net migration
- Total fertility rate increases and varies among regions – effects of variation upset by variation in age structure
- Net external migration (immigration) increased substantially the last years (esp. from 2003), vastly favouring the most central municipalities:
  - All municipalities with internal migration surplus in 2007 also had an external migration **surplus** (151 municipalities)
  - One fifth of the 280 municipalities with internal migration **deficit** had enough external migration surplus to upset it.

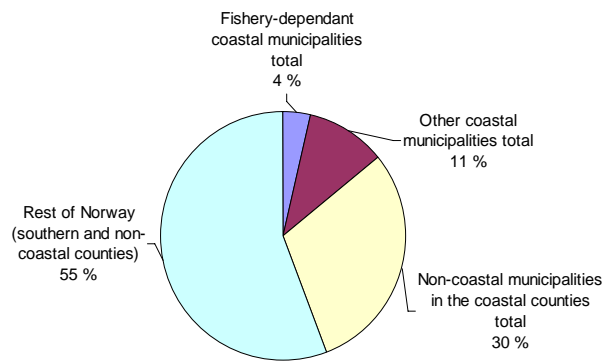
## Recent population trends in coastal municipalities


- Definition of coastal municipalities
- Population shares in coastal municipalities
- Recent general coastal population trends

## Coastal and non-coastal communities

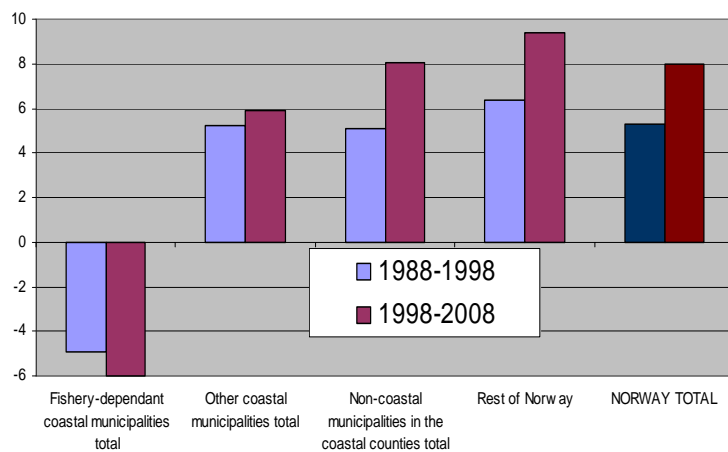
- Coastal municipalities in western/northern coastal counties:
  - Municipalities located in one of the nine western and northern Norwegian counties, all with a coastline (Rogaland, Hordaland, Sogn og Fjordane, Møre- og Romsdal, Sør- og Nord-Trøndelag, Nordland, Troms, Finnmark)
  - Municipalities within these counties classified as "coastal" according to the location of their main population base
    - Types of coastal municipalities:
      - Fishery dependent coastal municipalities (according to share of employment in fishery/fish farming industries)
      - Non-fishery-dependent coastal municipalities
- Non-coastal municipalities in western/northern coastal counties
- The rest of Norway = The southern and inland counties

Municipalities in the counties of Rogaland, Hordaland, Sogn og Fjordane, Møre og Romsdal, Sør- og Nord-Trøndelag, Nordland, Troms og Finnmark according to coastal location. Population shares of Norway total 2008

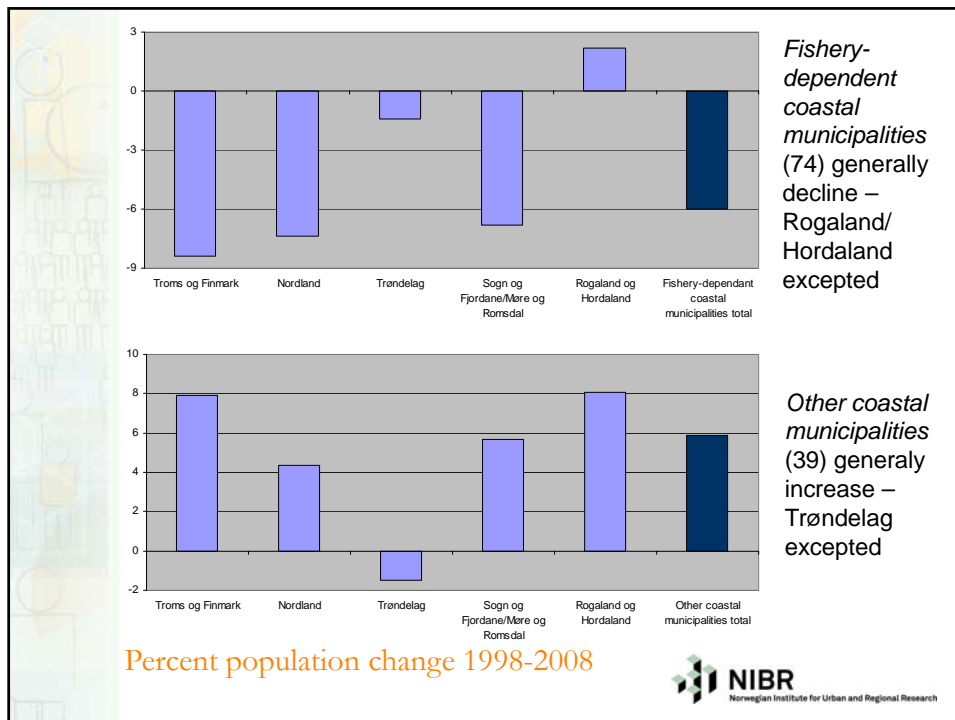


Coastal: More than 60% of area, 15% of pop.  **NIBR**  
Norwegian Institute for Urban and Regional Research

Percent population change 1988-1998 and 1998-2008 in coastal and other types of municipalities



 **NIBR**  
Norwegian Institute for Urban and Regional Research



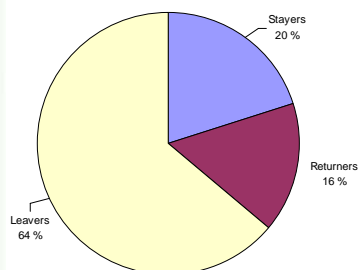
## Coastal population trends summary

- Coastal municipalities as here defined comprise 113 municipalities, cover more than 60 percent of the area, but less than 15 percent of the population – the population share decreasing only slightly since the late 1980s
- There is a very strong centralization process along the coast, disfavours fishery-dependant municipalities (the majority) and especially the northern and north-western part
- The decline in fishery-dependent coastal municipalities is due to the migratory behaviour particularly in the age-span 21/22-27/28 and partly 14/15-20/21, in the north even in the age-span 28/29-34-35 (the pattern prevails over two decades)
- In relation to the national average these processes have led to a marked underrepresentation of children (<10 years old) and young adults (25-35 years old), and an overrepresentation of middle and older aged people (over 55-60 years) in the fishery-dependant coastal municipalities

## Life-course migration trends in coastal areas (persons born 1965-69 followed from age 15 in 1980-84 till age 38-42 in 2007)

- Growing up in coastal Norway; where do they go from there?
- Living in coastal Norway; where do they come from?
- The "newcomers"; do they stay or do they leave?

### Women

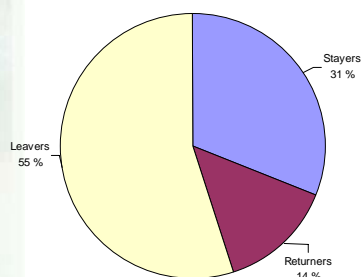


Growing up in fishery-dependent coastal municipalities (followed from 15 to 38-42 years of age):

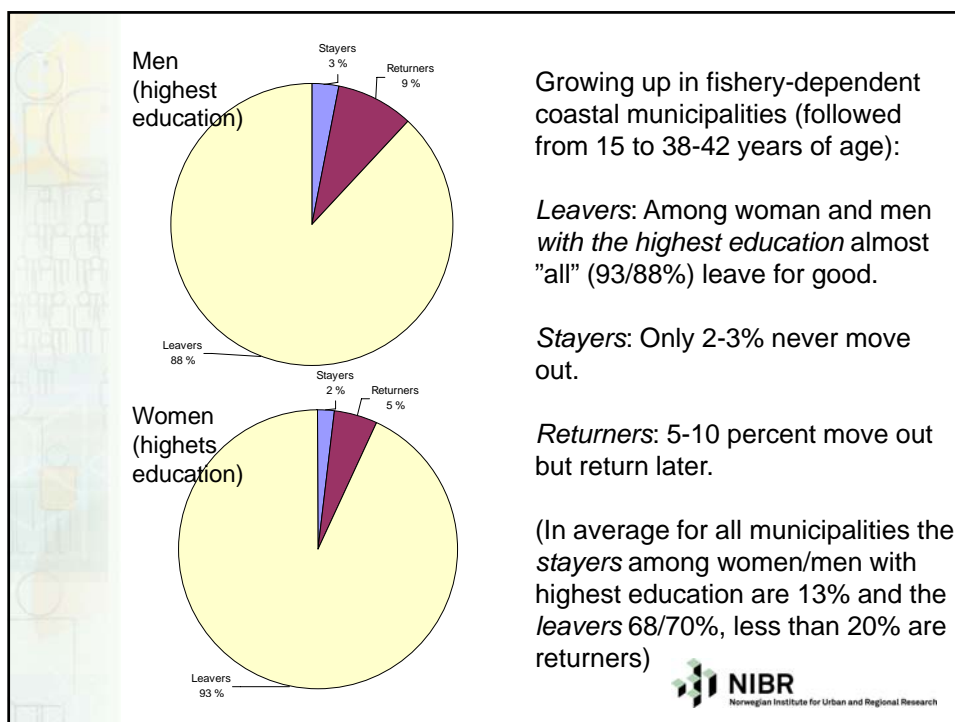
*Stayers*: Only 20% of the women never leave (31% of the men)

*Leavers*: 64/55% (women/men) leave for good

### Men



(In average for all municipalities the *stayers* among women/men are 27/36% and the *leavers* 53/46%, around 20% are returners)



Leavers, arrivers and net loss/gain for the cohort 1965-69 from age 15 (1980-84) to age 38-42 (2007). Some of the loss in fishery-dependant coastal municipalities is compensated by arrivers from other parts of the world, but they still lose a considerable share of the cohort (35/38 percent in total).

All persons born 1965-69 (from 15 to 38-42)	Men			Women		
	Leavers	Arrivers	Net result	Leavers	Arrivers	Net result
Norway total	-46	57	11	-53	63	10
Fishery dependant coastal municipalities	-55	20	-35	-64	26	-38
Other coastal municipalities	-44	42	-2	-52	47	-5
Non-coastal municipalities in coastal counties	-42	39	-3	-50	52	2
Southern and inland Norway	-47	71	24	-53	77	24

All persons who took the highest education	Men			Women		
	Leavers	Arrivers	Net result	Leavers	Arrivers	Net result
Norway total	-68	76	8	70	80	10
Fishery dependant coastal municipalities	-88	17	-71	93	19	-74
Other coastal municipalities	-74	48	-26	76	52	-24
Non-coastal municipalities in coastal counties	-66	65	-1	67	64	-3
Southern and inland Norway	-68	94	26	69	101	32

**NIBR**  
Norwegian Institute for Urban and Regional Research

New-comers to the municipalities in the cohort 1965-69 during their life-span from age 15 (1980-84) to age 38-42 (2007) are mostly moving out again after a while, and much more so in fishery-dependant coastal municipalities. Non-coastal municipalities are most successful in keeping their new-comers. Women new-comers seem to be more stable than men.....

**NEW-COMERS (in-migrants from other types of municipalities and abroad)**

Municipality type	Men		Women	
	Stayed	Moved on	Stayed	Moved on
Fishery dependant coastal municipalities	26	74	31	69
Other coastal municipalities	40	60	42	58
Non-coastal municipalities in coastal counties	43	57	46	54



## Life-course migration trends in coastal areas summary

- Growing up in coastal Norway means a very high probability of moving to another type of region before the age of 38-40.
- In average the Norwegian "periphery" loses around 30 percent of their cohorts during the life-span from age 15 to around 40, even more in the coastal periphery, and even more in the fishery-dependent part.
- The probability to move away is higher among women than among men, and increases with level of education.
- New-comer in-migrants to coastal municipalities usually move on after a while (more so in fishery-dependent coastal municipalities)
- The pattern seems to have persisted for all cohorts born during the 1950s, 1960s and 1970s, but impacts more apparent with reduced fertility





Thanks for your attention!

[olaf.foss@online.no](mailto:olaf.foss@online.no)

tlf: 22 95 89 44

